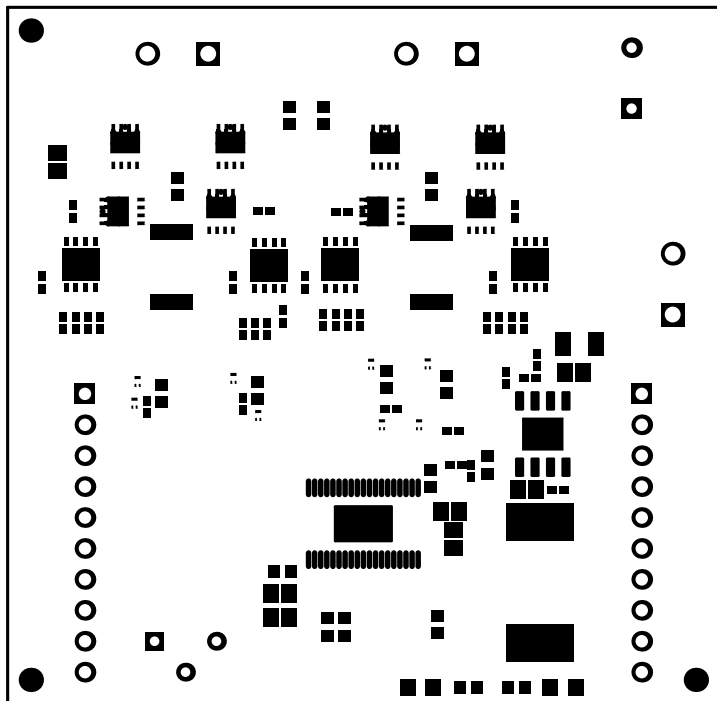
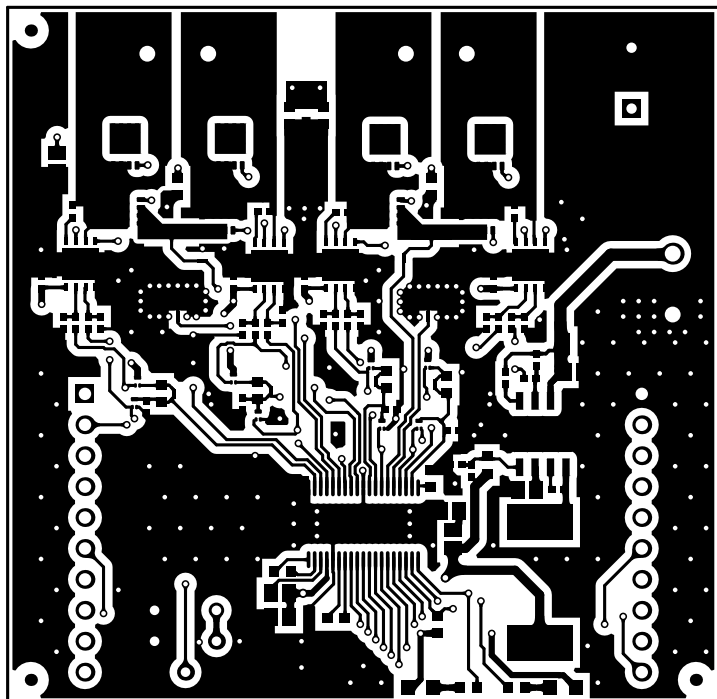


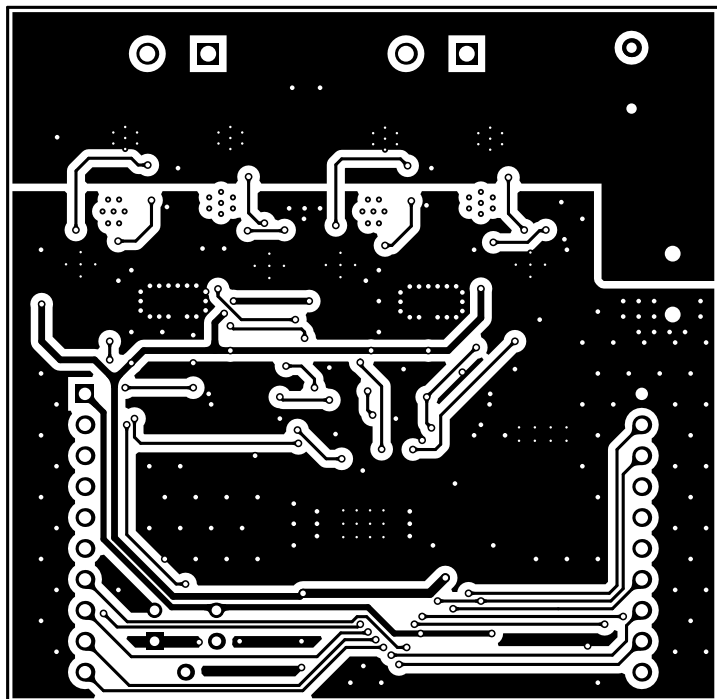
ALL ARTWORK VIEWED FROM TOP SIDE	BOARD #: TIDA-01227	REV: E2	SUN REV: Not In VersionControl
LAYER NAME = Top Overlay			
PLOT NAME = Top Overlay	GENERATED : 12/5/2016 11:12:42 AM	TEXAS INSTRUMENTS	



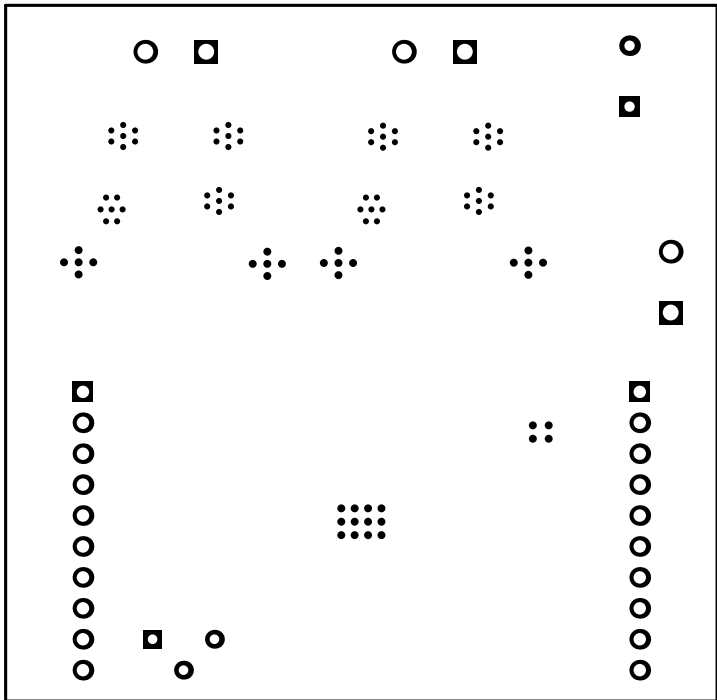
ALL ARTWORK VIEWED FROM TOP SIDE	BOARD #: TIDA-01227	REV: E2	SUN REV: Not In VersionControl
LAYER NAME = Top Solder			
PLOT NAME = Top Solder Mask	GENERATED : 12/5/2016 11:12:46 AM	TEXAS INSTRUMENTS	



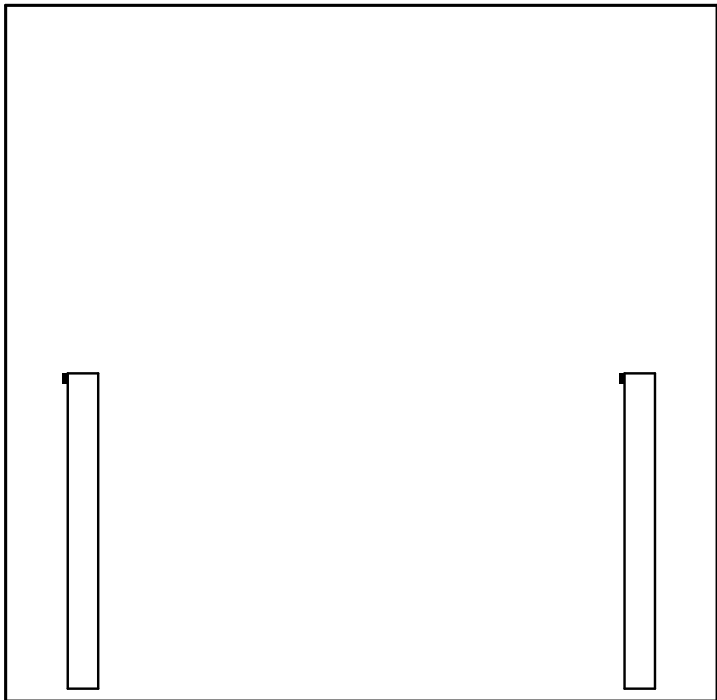
ALL ARTWORK VIEWED FROM TOP SIDE	BOARD #: TIDA-01227	REV: E2	SUN REV: Not In VersionControl
LAYER NAME = Top Layer			
PLOT NAME = Top Layer	GENERATED : 12/5/2016 11:12:49 AM	TEXAS INSTRUMENTS	



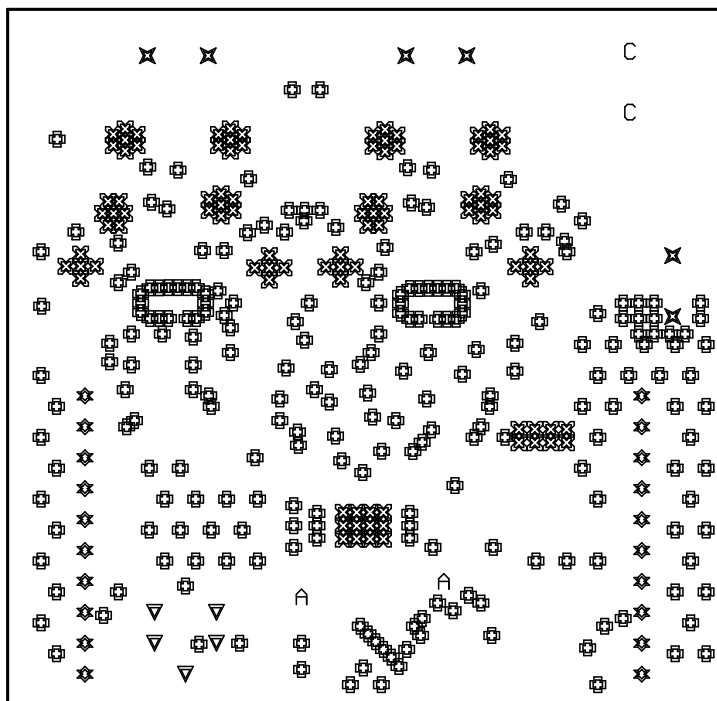
ALL ARTWORK VIEWED FROM TOP SIDE	BOARD #: TIDA-01227	REV: E2	SUN REV: Not In VersionControl
LAYER NAME = Bottom Layer			
PLOT NAME = Bottom Layer	GENERATED : 12/5/2016 11:12:53 AM	TEXAS INSTRUMENTS	



ALL ARTWORK VIEWED FROM TOP SIDE	BOARD #: TIDA-01227	REV: E2	SUN REV: Not In VersionControl
LAYER NAME = Bottom Solder			
PLOT NAME = Bottom Solder Mask	GENERATED : 12/5/2016 11:12:57 AM	TEXAS INSTRUMENTS	

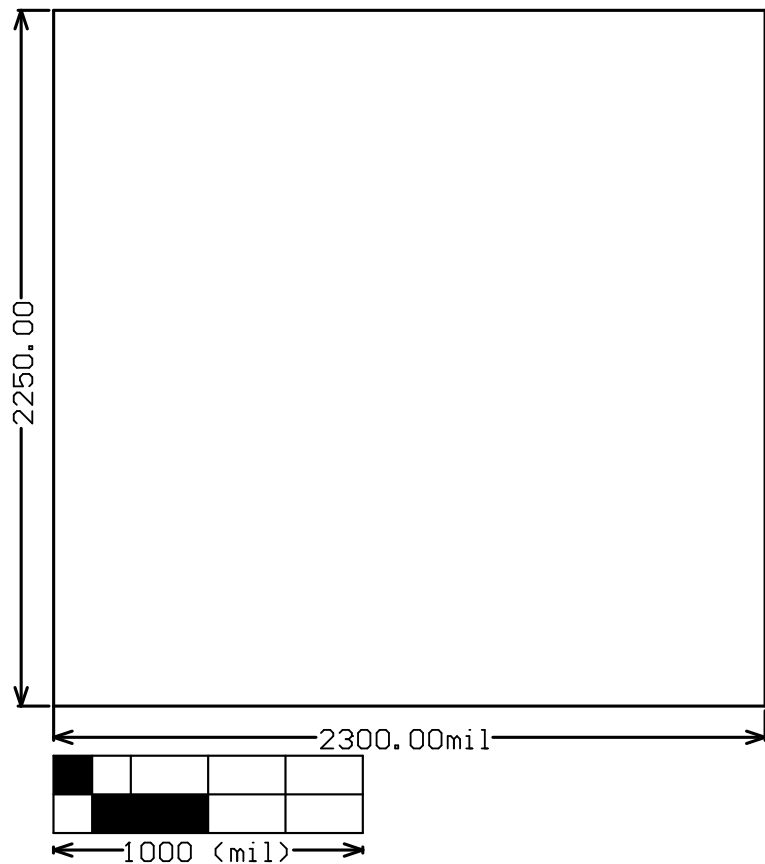


ALL ARTWORK VIEWED FROM TOP SIDE	BOARD #: TIDA-01227	REV: E2	SUN REV: Not In VersionControl
LAYER NAME = Bottom Overlay			
PLOT NAME = Bottom Overlay	GENERATED : 12/5/2016 11:13:01 AM		TEXAS INSTRUMENTS



Symbol	Quantity	Finished Hole Size	Plated	Hole Type
✕	96	7.87mil (0.200mm)	PTH	Round
⊗	241	15.00mil (0.381mm)	PTH	Round
⋈	2	18.00mil (0.457mm)	PTH	Round
▼	5	31.00mil (0.787mm)	PTH	Round
⊖	2	33.46mil (0.850mm)	PTH	Round
✱	20	40.16mil (1.020mm)	PTH	Round
✕	6	51.18mil (1.300mm)	PTH	Round
372 Total				

ALL ARTWORK VIEWED FROM TOP SIDE	BOARD #: TIDA-01227	REV: E2	SUN REV: Not In VersionControl
LAYER NAME = Drill Drawing			
PLOT NAME = Drill Drawing	GENERATED : 12/5/2016 11:13:05 AM	TEXAS INSTRUMENTS	



ALL ARTWORK VIEWED FROM TOP SIDE	BOARD #: TIDA-01227	REV: E2	SUN REV: Not In VersionControl
LAYER NAME = M2 Board Dimensions			
PLOT NAME = Board Dimensions	GENERATED : 12/5/2016 11:13:09 AM	TEXAS INSTRUMENTS	